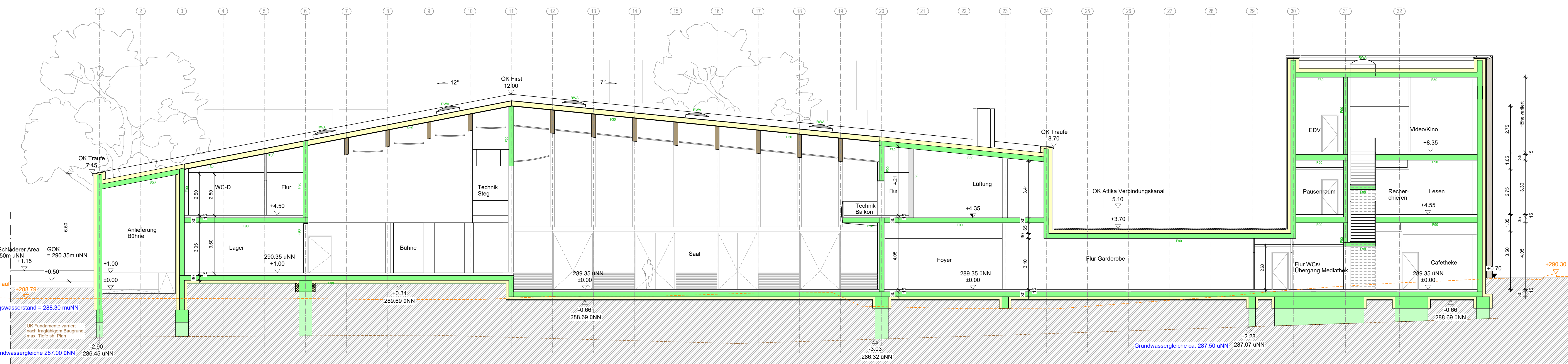
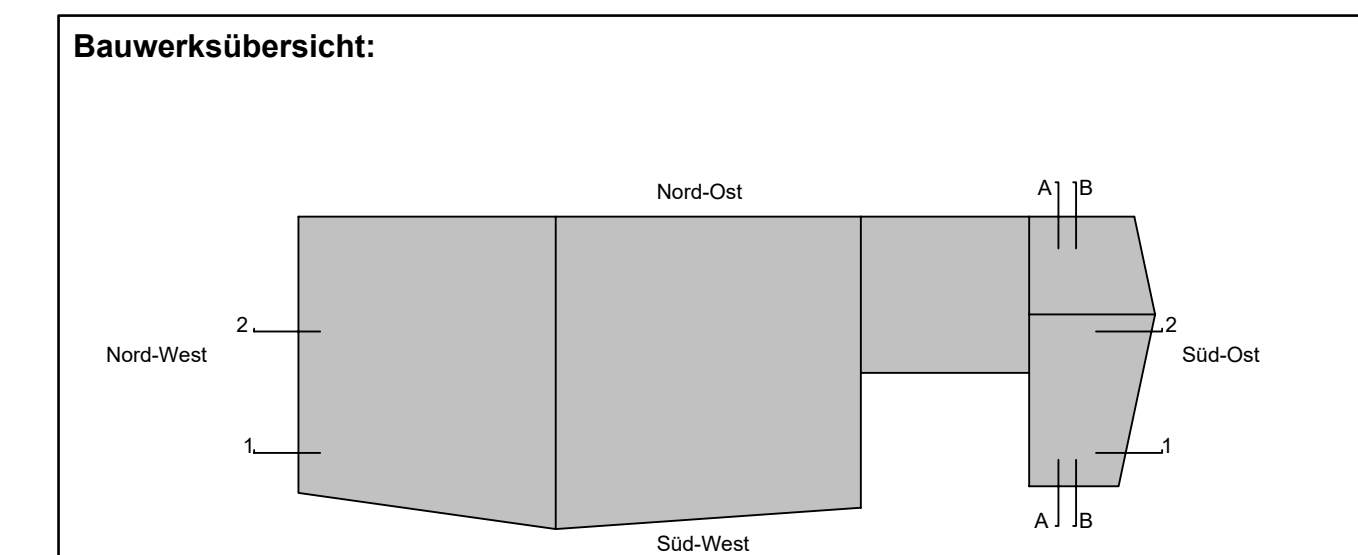


Schnitt 1-1



Schnitt 2-2

BAUTEILE	
<span style="background-color: #90EE90; border: 1px solid black; display: inline-block; width: 15px; height: 10px;"></span> Stahlbeton, bewehrt n. Statik	<span style="background-color: #FFFACD; border: 1px solid black; display: inline-block; width: 15px; height: 10px;"></span> Wärmedämmung
<span style="background-color: #FFD700; border: 1px solid black; display: inline-block; width: 15px; height: 10px;"></span> Mauerwerk, Ziegel	<span style="background-color: #808080; border: 1px solid black; display: inline-block; width: 15px; height: 10px;"></span> Holzwände/-decken
<span style="background-color: #FF0000; border: 1px solid black; display: inline-block; width: 15px; height: 10px;"></span> Wände/Bauteile, allgemein - ABRUCH	<span style="background-color: #404040; border: 1px solid black; display: inline-block; width: 15px; height: 10px;"></span> Stahlbeton, bewehrt - BESTAND
<span style="background-color: #ADD8E6; border: 1px solid black; display: inline-block; width: 15px; height: 10px;"></span> GK-Metalständerwand	<span style="background-color: #808080; border: 1px solid black; display: inline-block; width: 15px; height: 10px;"></span> Mauerwerk - BESTAND



± 0.00 = 289,35 m ü.NN

Blatt:	415	Skala:	A	Datum:	25.10.2022	Blatt:	A0	Blatt:	300	Maßstab:	1:100
<p>Neubau Faustforum Am Schiekrain 1-3 79219 Staufen</p> <p>Stadt Staufen Hauptstraße 53 79219 Staufen i. Br.</p> <p>Baugesuchsplan Schnitt 1-1 u. 2-2 ARC-4-SC-XX-415-A</p>											

fuchs.mauchler  
 architekten/bda  
 am schiekrain 1-3  
 79219 staufen  
 telefon: +49 780 2200-1  
 fax: +49 780 2200-2  
 www.fuchsmauchler.de